

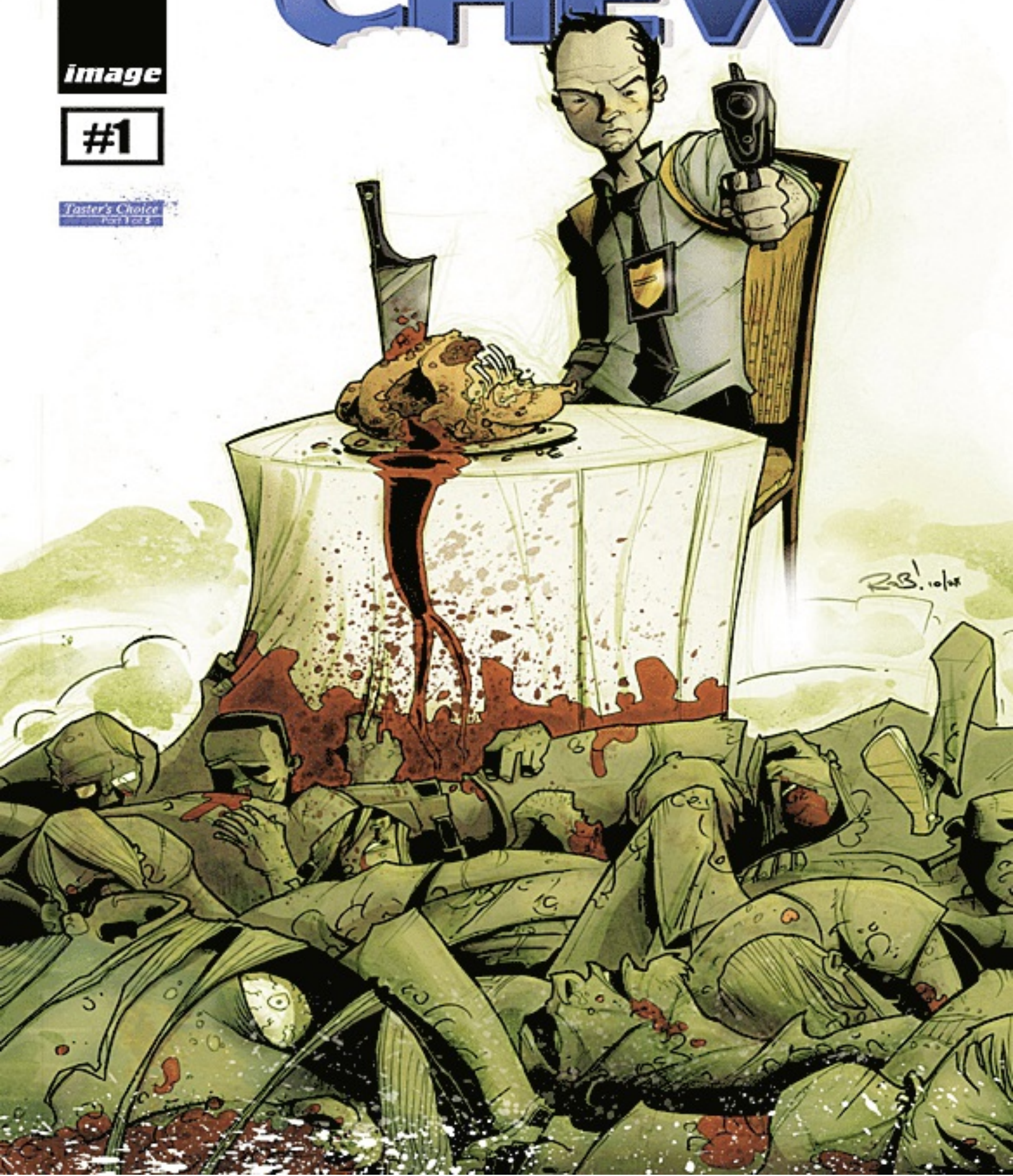


#1

Taster's Choice  
Page 1 of 5

John Layman • Rob Guillory

# CHEW











## MEET TONY CHU.


TONY CHU IS ALMOST  
ALWAYS HUNGRY, AND  
ALMOST NEVER EATS.

HERE'S WHY:



TONY CHU IS  
*CIBOPATHIC.*

THAT MEANS HE CAN TAKE A BITE  
OF AN APPLE, AND GET A FEELING  
IN HIS HEAD ABOUT WHAT TREE IT  
GREW FROM, WHAT PESTICIDES  
WERE USED ON THE CROP, AND  
WHEN IT WAS HARVESTED.



OR HE COULD EAT A  
HAMBURGER, AND  
FLASH ONTO SOME-  
THING ELSE ENTIRELY.



STRANGELY ENOUGH, THE  
ONLY FOOD TONY CHU CAN  
EAT AND *NOT* GET A PSYCHIC  
SENSATION FROM IS *BEETS*.



CONSEQUENTLY,  
TONY CHU EATS  
A LOT OF BEETS.

ANYTHING  
ELSE, GIRL?

JUST  
THE BEETS,  
PLEASE.







THE LAST NIGHT OF  
THE STAKEOUT.

Fairmount  
Speedy Upholstery

OUT  
OF  
BUSI-  
NESS!!

THANK  
FOR YOUR  
PATRONAGE  
!!!



HEADS  
UP.



LOOKS LIKE  
WE GOT SOME  
CARRY OUT.



HMM.  
WHAT DO YOU  
THINK?

LET HIM GET  
A FEW BLOCKS  
AWAY AND  
TICKET HIM?



NAH. HE'S  
HOLDING A BREAST  
AND A COUPLE OF  
WINGS. PROBABLY  
LESS THAN A  
POUND.

POOR  
BASTARD  
PROBABLY  
BLEW HIS  
ENTIRE  
PAYCHECK  
ON IT.



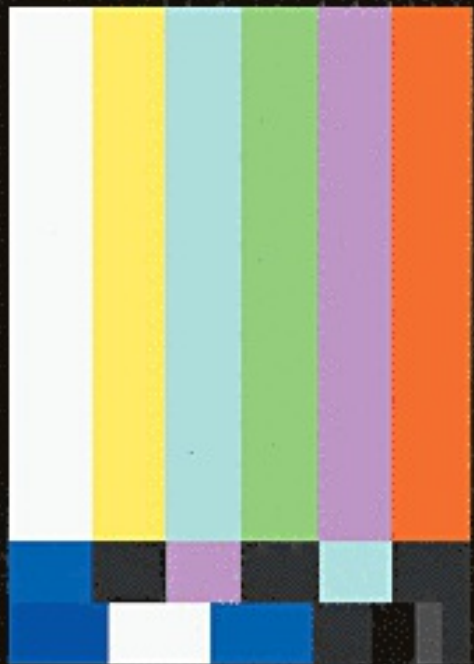
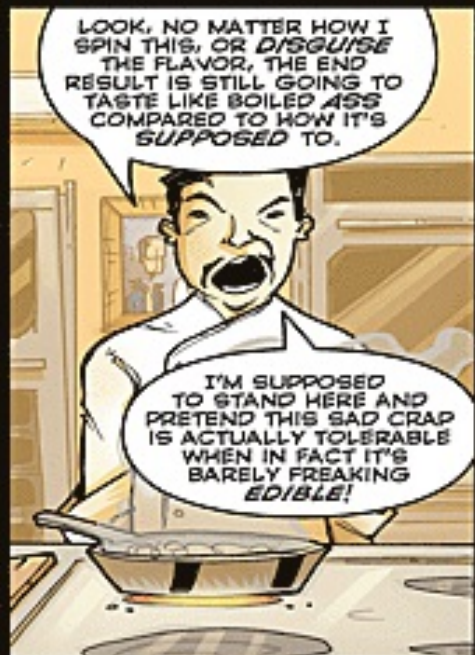
LET HIM  
BE.

NOT  
WORTH THE  
PAPERWORK.









THE CULINARY NETWORK'S *IN THE KITCHEN WITH CHOW CHU* WENT ON HIATUS IMMEDIATELY AFTER THE BROADCAST OF ITS OCTOBER 13TH EPISODE.

THE F.C.C., UNDER THE ADVICE OF THE F.P.A., SUSPENDED *CHOW CHU* FROM APPEARING ON THE AIR FOR EIGHT MONTHS, AND LEVIED A FOUR MILLION DOLLAR FINE AGAINST THE CULINARY NETWORK, THE HIGHEST FINE IN CABLE NETWORK HISTORY.